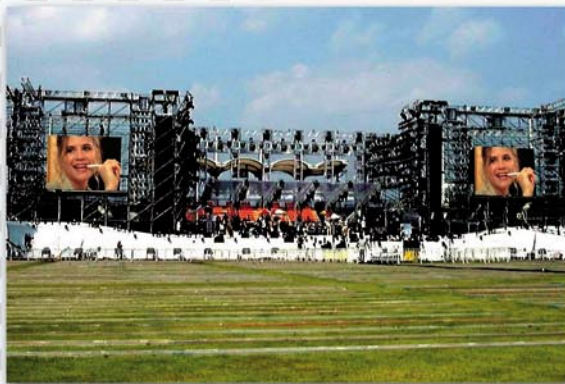


TECHNO RAINBOW FULL COLOR LED DISPLAY SYSTEM

12.5mm* INDOOR/OUTDOOR LED DISPLAY

- ▶ Dual use for modular and fixed installation
- ▶ 12.5mm virtual resolution using **TECHNOVIRTUAL**
- ▶ Brilliant image and vivid color for maximum impact

**PORTABLE • STACKABLE • MODULAR • LOW POWER • LIGHTWEIGHT
VERSATILE • SIMPLIFIED CABLING • EASY MAINTENANCE**



Modular installation



Fixed installation

▶ MODULE SPECIFICATIONS

LED Pixels	* 25mm pitch — cylinder-type LEDs per pixel (R1, G2, B1) (dot pitch 12.5mm)
Brightness	5,000 cd/m ²
Display Colors	over 1 billion colors
Image Depth	approximately 1,024 steps; 10-bit minimum
Viewing Angle	left to right 160°, up 20°, down 35°
Pixel Number	32 (H) x 48 (V) (Virtual 64H x 96V)
Display Size	800 x 1,200mm (31.5" x 47.2") = .96m ² (10.4 ft ²) (approx. 57 inches diagonally)
Weight	60Kg (132 lbs)
Power Consumption	630 Watt (max)
Power Supply	AC100V ~ 240V single phase

Big screen solutions
for the 21st Century



TECHNO RAINBOW FULL COLOR LED DISPLAY SYSTEM

POSSIBLE SCREEN SIZE EXAMPLES

INCH DIAGONAL	H x V (mm)		H x V (ft.)		PIXELS H x V		VIRTUAL PIXELS H x V		SCREEN AREA (m ²) (ft. ²)		NUMBER OF MODULES H x V		TOTAL MODULES	ASPECT RATIO	POWER (Watts) Max / Average	WEIGHT Kg Lbs	
	H	V	H	V	H	V	H	V	m ²	ft. ²	H	V				Kg	Lbs
57	800	1,200	2.62	3.94	32	48	64	96	0.96	10.33	1	1	1	16:9	630	60	132
236	4,800	3,600	15.75	11.81	192	144	384	288	17.3	186.00	6	3	18	4:3	11,340	1,080	2,381
289	6,400	3,600	21.00	11.81	256	144	512	288	23.0	248.00	8	3	24	16:9	15,120	1,440	3,175
315	6,400	4,800	21.00	15.75	256	192	512	384	30.7	330.67	8	4	32	4:3	20,160	1,920	4,233
395	8,800	4,800	28.87	15.75	352	192	704	384	42.2	454.67	11	4	44	16:9	27,720	2,640	5,820
394	8,000	6,000	26.25	19.69	320	240	640	480	48.0	516.67	10	5	50	4:3	31,500	3,000	6,614
473	10,400	6,000	34.12	19.69	416	240	832	480	62.4	671.67	13	5	65	16:9	40,950	3,900	8,598
472	9,600	7,200	31.50	23.62	384	288	768	576	69.1	744.00	12	6	72	4:3	45,360	4,320	9,524
578	12,800	7,200	41.99	23.62	512	288	1024	576	92.2	992.00	16	6	96	16:9	60,480	5,760	12,698
551	11,200	8,400	36.75	27.56	448	336	896	672	94.1	1012.67	14	7	98	4:3	61,740	5,880	12,963
630	12,800	9,600	41.99	31.50	512	384	1024	768	122.9	1322.67	16	8	128	4:3	80,640	7,680	16,931
684	15,200	8,400	49.87	27.56	608	336	1216	672	127.7	1374.34	19	7	133	16:9	83,790	7,980	17,593
735	16,000	9,600	52.49	31.50	640	384	1280	768	153.6	1653.34	20	8	160	16:9	100,800	9,600	21,164
709	14,400	10,800	47.24	35.43	576	432	1152	864	155.5	1674.00	18	9	162	4:3	102,060	9,720	21,429
787	16,000	12,000	52.49	39.37	640	480	1280	960	192.0	2066.67	20	10	200	4:3	126,000	12,000	26,455

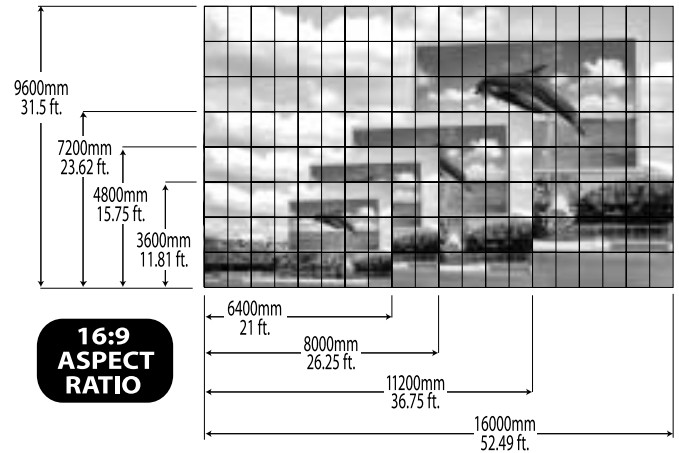
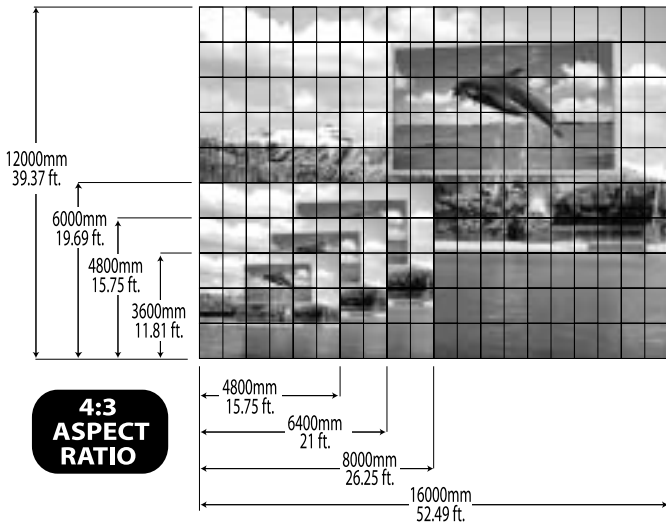
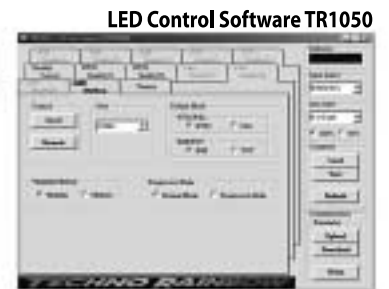


IMAGE PROCESSING SYSTEM SPECIFICATIONS

Input Signal	HD-SDI/STD-SDI/DVI-D (progressive only; looping)
Output Signal	100base-T (TR-link original) (100m max.) Up to 832 x 640 pixels, 1.0 frame delay
Control	Screen configuration Screen ON/OFF, Brightness, Test Pattern Input Signal, Color Preset, Scaling 25% ~ 200%
Dimension	430mm(17")W x 100mm(4")H (2U)
Power Supply	AC100V ~ 240V single phase



TOSHIBA TRANSPORT ENGINEERING INC.

JAPAN HEADQUARTERS
Display Media Overseas Department
Tokyo, Japan
PHONE: +81-42-335-6715
FAX: +81-42-354-3488
E-MAIL: technorainbow@technorainbow.com

NORTH AMERICAN HEADQUARTERS
Toshiba International Corp.
Houston, Texas, USA
PHONE: (800) 231-1412
FAX: (713) 466-8773
www.tic.toshiba.com

NORTH AMERICAN SALES
Kaizen Display Solutions
Portland, Oregon, USA
PHONE: (503) 238-5880
FAX: (503) 238-7501
E-MAIL: toshiba@kaizendisplay.com

EUROPEAN SALES
Display Knowledge
Somerset, United Kingdom
PHONE: + 44 1458 253250
E-MAIL: info@displayknowledge.com

CANADIAN SALES
Chris Grant Group Inc.
Ontario, Canada
PHONE: (800) 837-0286
FAX: (905) 815-1344
E-MAIL: sales@chrisgrant.com