

Why ^{Optical} Microscopy will not work

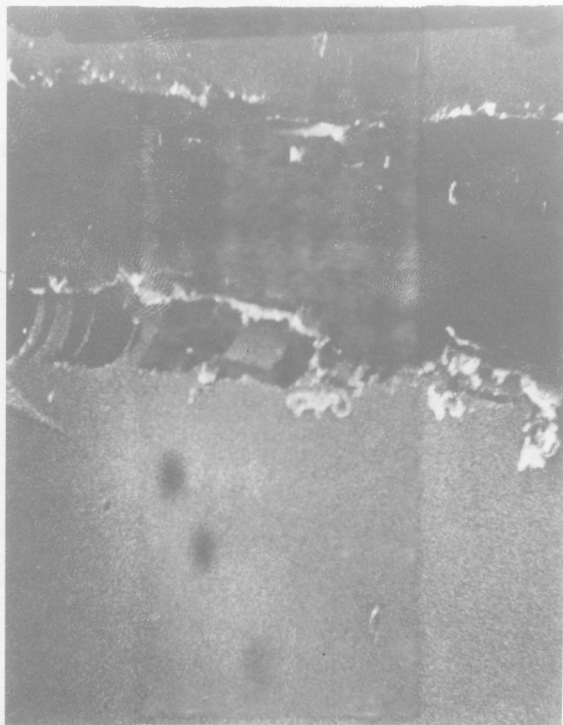
3 types of Distortion

Spherical $\Delta r_s \approx C_s \beta^3$

Chromatic $\Delta r_c \approx C_c \beta \frac{\Delta E}{E}$

Astigmatism $\Delta r_a \approx \Delta r_n \beta$

$\Rightarrow \Delta r_{min} \approx C_c^{1/4} \lambda^{3/4} \Rightarrow$



30-40 PM

200x

TEM

②

- Diagram
- How does it work
- Brightfield
- Darkfield
- Diffraction Pattern

Basic Design

SEM - DIAGRAM

How it works

Secondary Elect

BSE

IDXi

Wrong camera, held by hand, South Made by Scope.



BATTERIES, ONE OF THE FIRST ATTEMPTS AT PLATES

BAD FILM, OLD SAMPLE, DIRTY APERTURES, DEAD

First SEM Image w/ISE 3/21/68 M2's