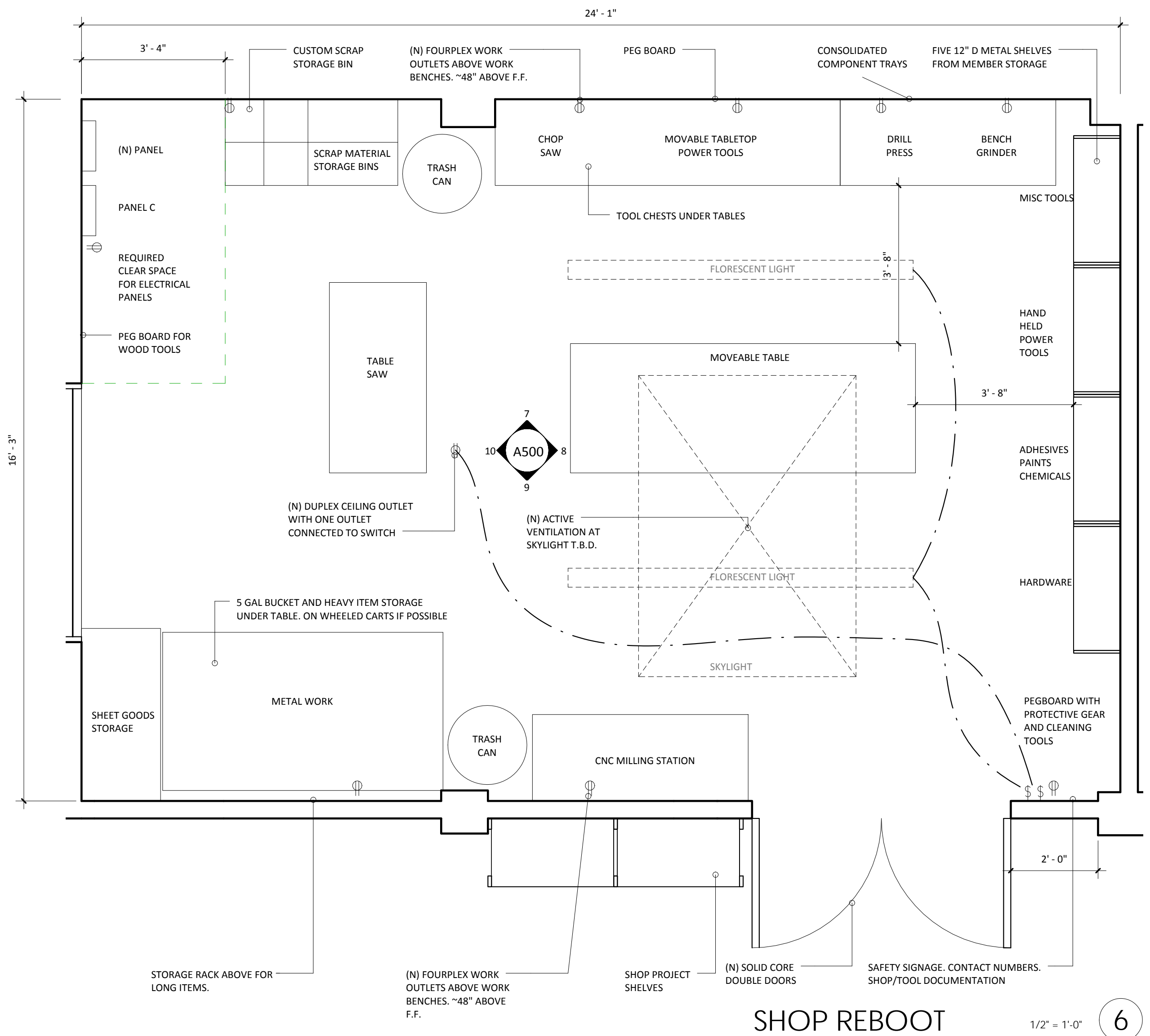
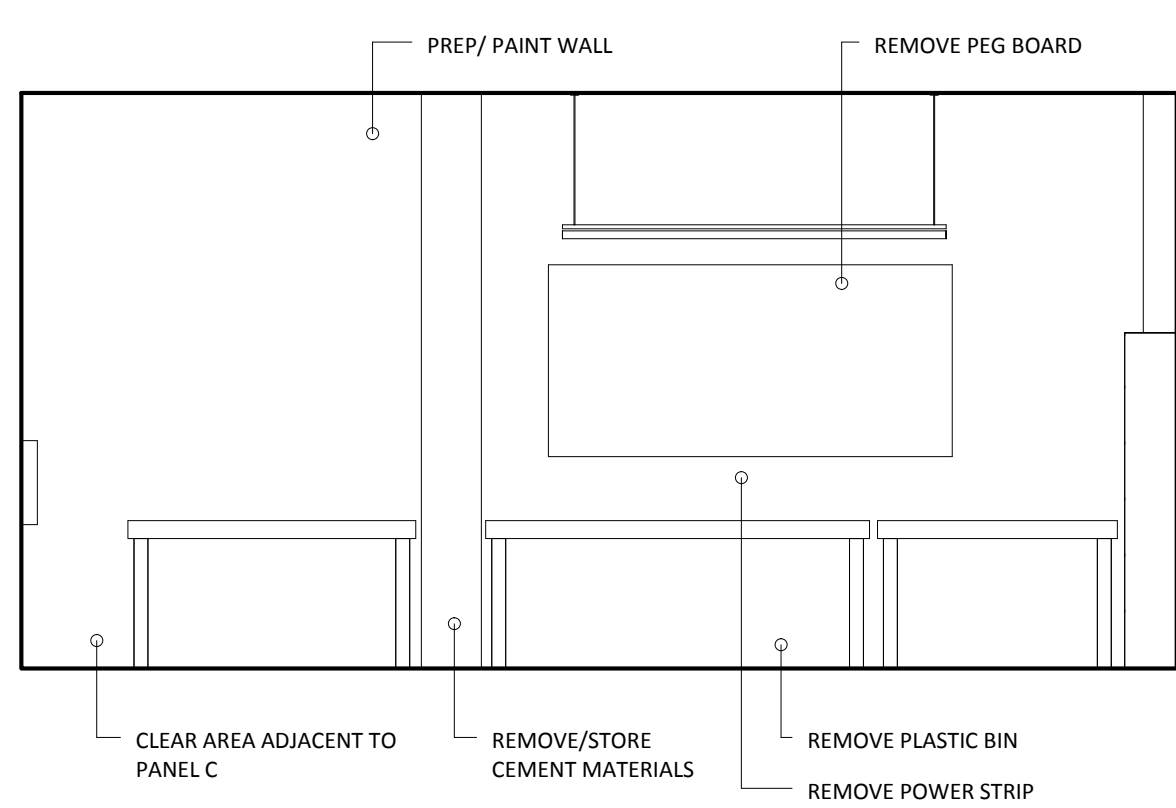


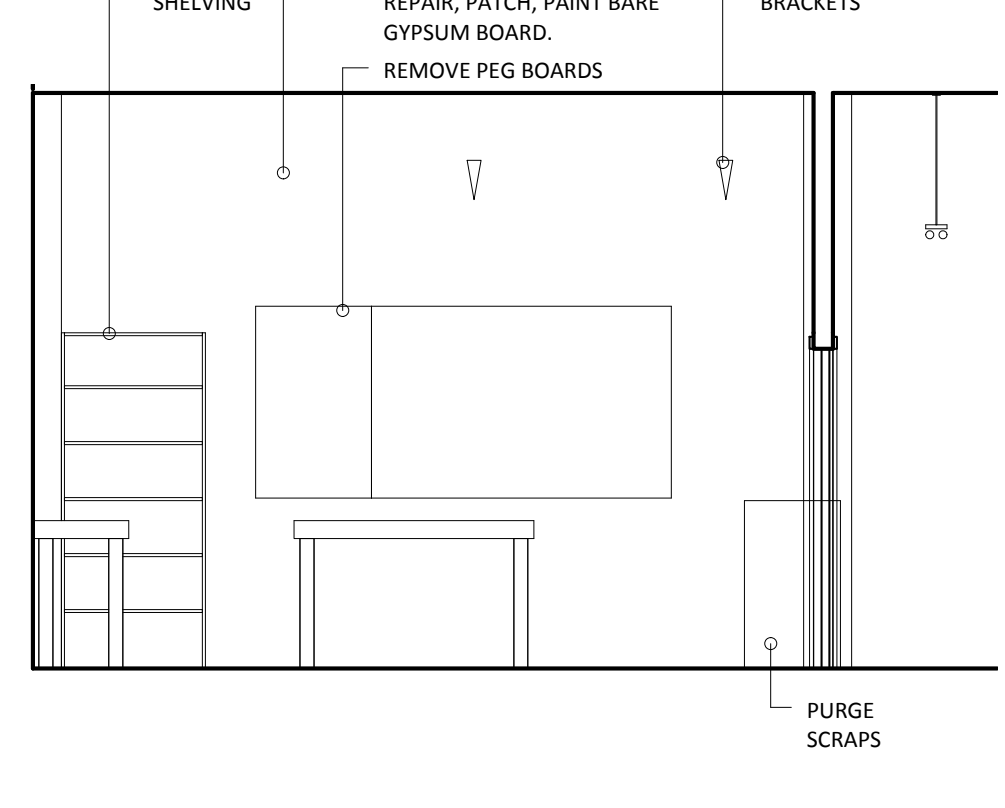
SHOP EXISTING 1/2" = 1'-0" 1



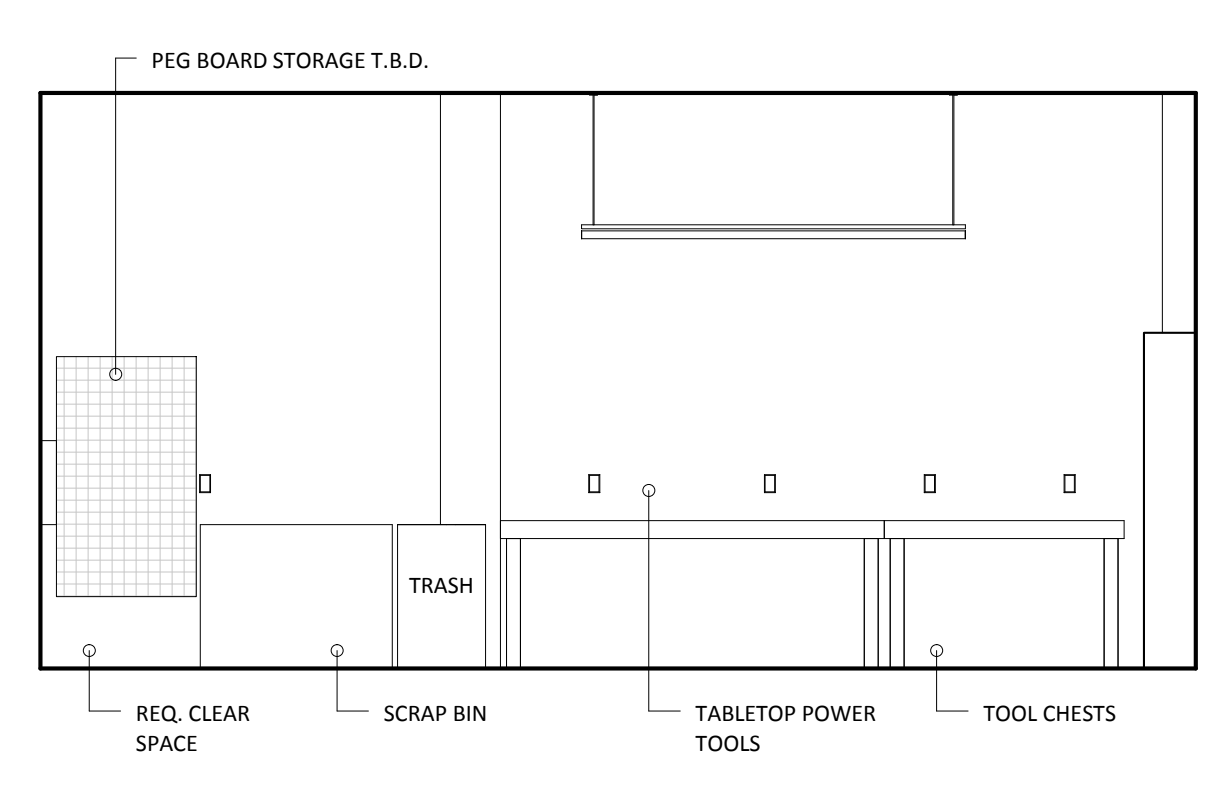
SHOP REBOOT 1/2" = 1'-0" 6



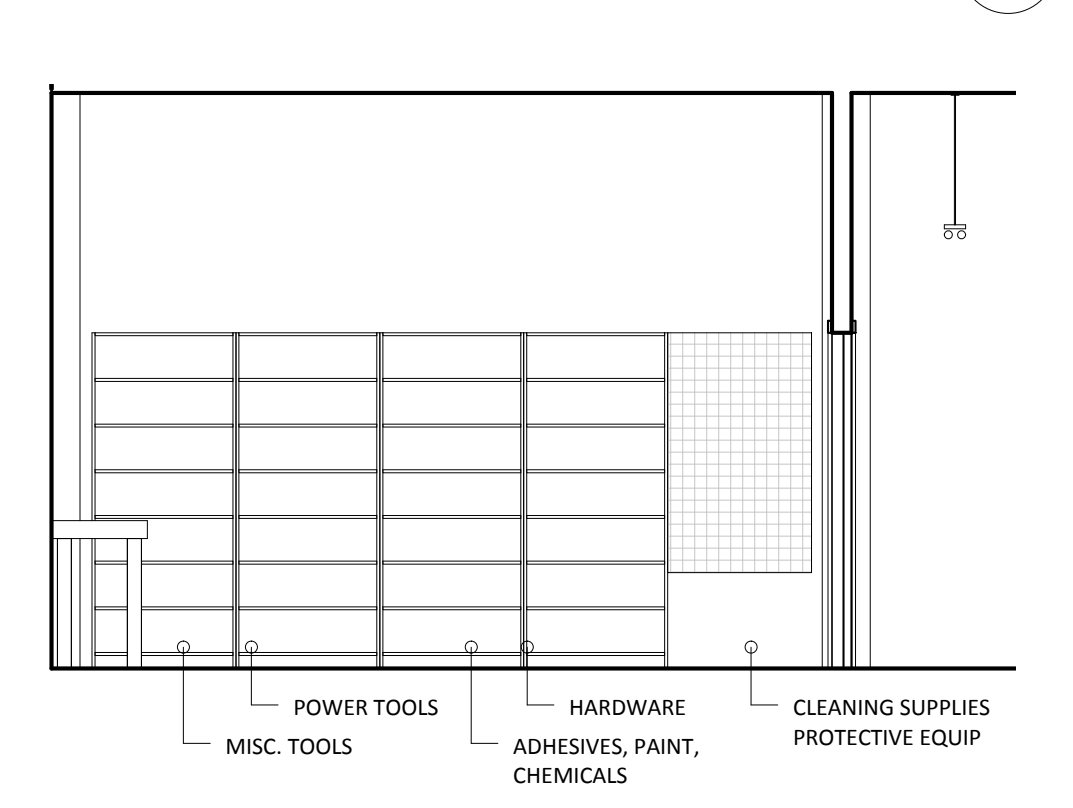
SHOP NORTH EXISTING 1/4" = 1'-0" 2



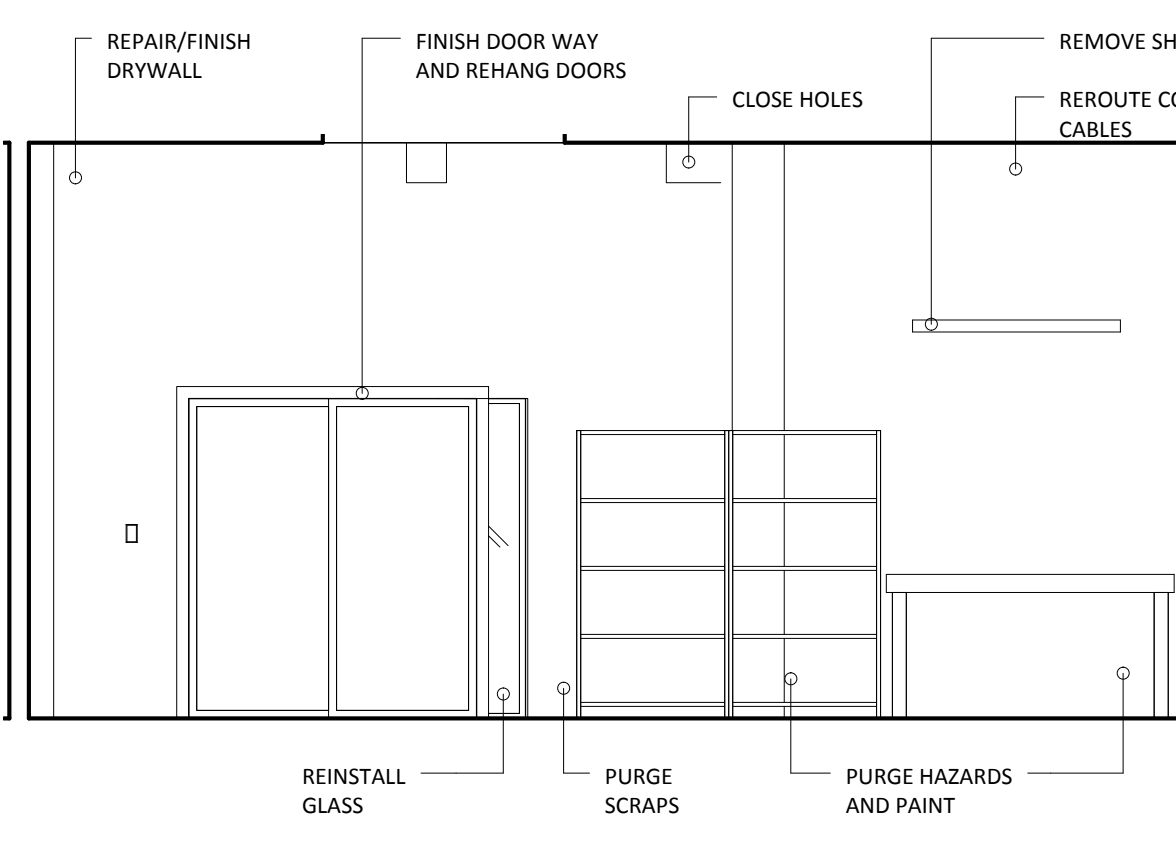
SHOP EAST EXISTING 1/4" = 1'-0" 3



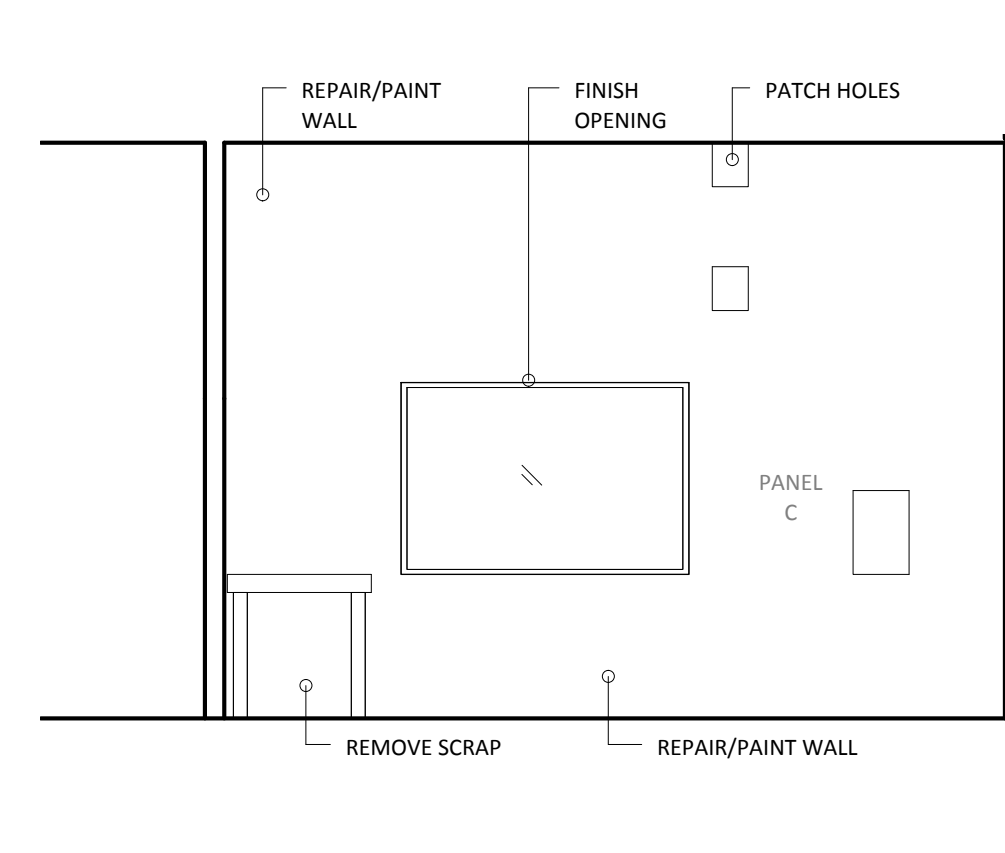
SHOP NORTH REBOOT 1/4" = 1'-0" 7



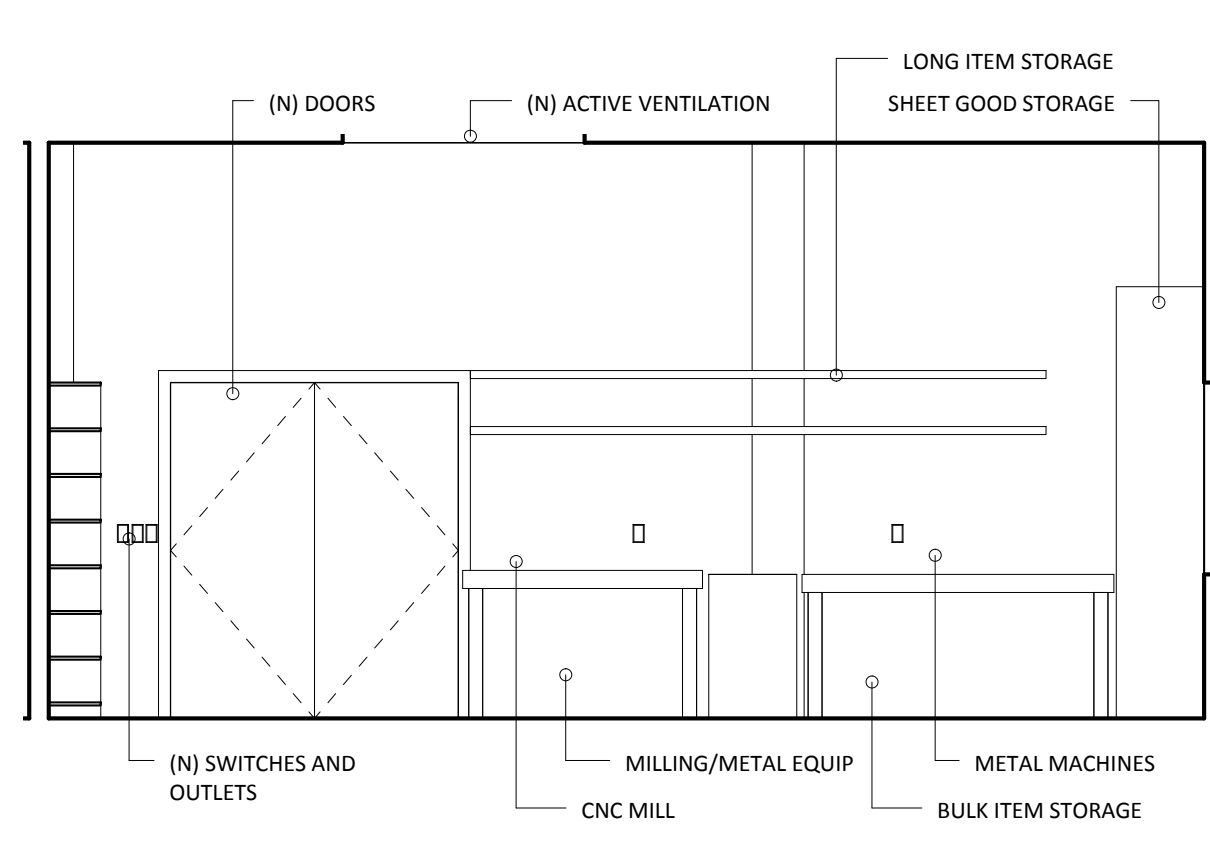
SHOP EAST REBOOT 1/4" = 1'-0" 8



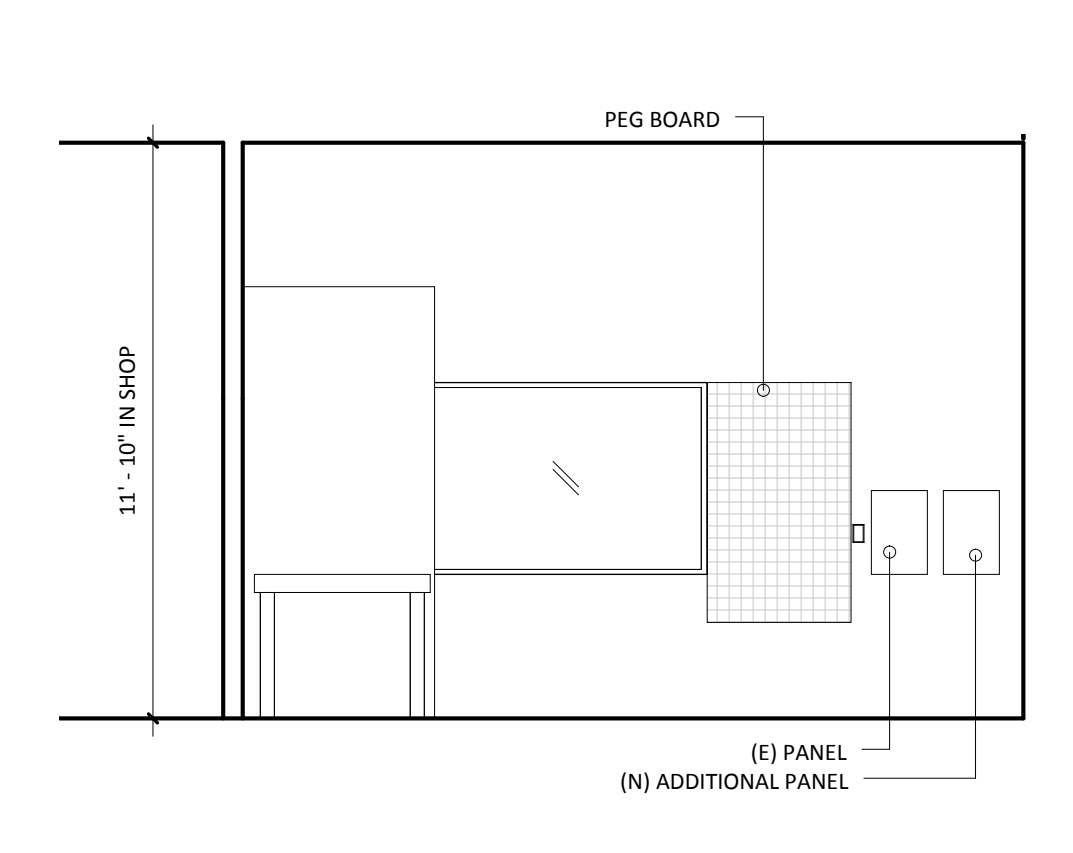
SHOP SOUTH EXISTING 1/4" = 1'-0" 4



SHOP WEST EXISTING 1/4" = 1'-0" 5



SHOP SOUTH REBOOT 1/4" = 1'-0" 9



SHOP WEST REBOOT 1/4" = 1'-0" 10

**SHOP REBOOT**

THE GOAL OF THE SHOP REBOOT IS TO MAKE THE NOISEBRIDGE SHOP A SAFER, MORE PRODUCTIVE PLACE TO WORK. THIS IS TO BE ACHIEVED BY CLEANING THE SHOP, REMOVING HAZARDS, ORGANIZING, AND REPAIRING/MAINTAINING OUR TOOLS.

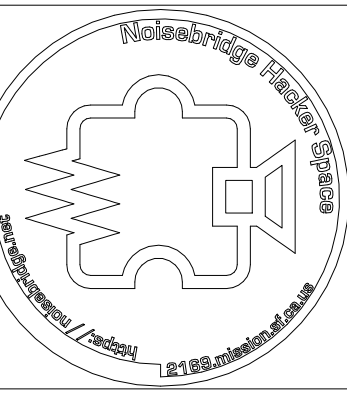
NOTES:  
1. EVERYTHING TO BE REMOVED FROM SHOP FOR FLOOR REFINISHING  
2. NOISEBRIDGE CONSTRUCTION MATERIALS WILL BE STORED OUTSIDE SHOP GOING FORWARD TO MAKE ROOM FOR WORK AND PROJECTS. LOCATIONS WILL BE DOCUMENTED IN SHOP FOR FUTURE REFERENCE.

TASKS AND DEPENDENCIES  
PURGE > MOVE-OUT > WALL REPAIR > REPAIR > ELECTRICAL > MOVE-IN

TIME LINE

REVISIONS

Drawn By:  
Jarrod Hicks  
hicksu@gmail.com



**ReMakeBaseBootClean 2 : Reboot**  
 2169 MISSION ST. SAN FRANCISCO CA.

Shop Reboot
Date 6/29/2014 12:27:36
Scale As indicated
Drawn Author
File
Sheet A500

C:\Dropbox\NoiseBridge\ReMakeBaseBootClean 2013\Media\NoiseBridge\_Reboot2014.rvt